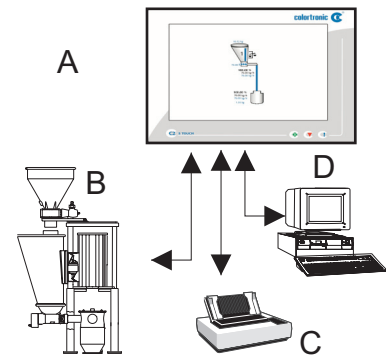


Typical application of a Gravimetric Control System

- A Dosing control system
- B Gravimetric dosing unit
- C Printer
- D Host

Component A is described below.



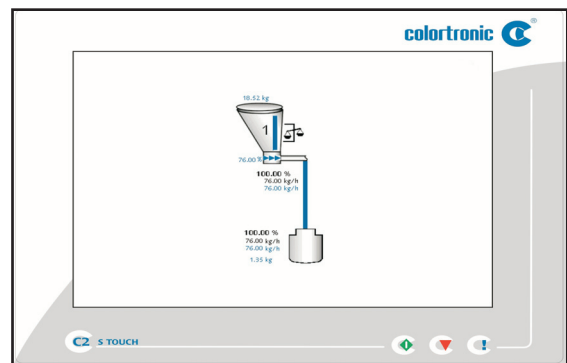
## Brief Description

The Colortronic C2 S Touch dosing control system is a computerized closed-loop control for up to two Colortronic gravimetric dosing and blending units.

Data entry can be made during production by means of a touch screen. Operation is menu-driven and can be password protected.

The control offers graphical and numerical display of the operation parameters of the entire installation. In the event journal, all changes in the settings and all alarm messages are time stamped.

- Colortronic dosing control systems are completely maintenance-free and designed for 7 day, 24-hour operation.
- Colortronic dosing control systems meet the european "CE" requirements.



## Technical Information

### Basic Version

- TFT Touch Screen Display (10.4 ")
- Data buffer in case of power failure
- Real-time clock
- One station can be controlled
- Type of protection: IP 54
- Permissible operating temperature: -10 to +45°C / 14 to +113 °F
- Permissible storage temperature: -25 to +70°C / -13 to +158 °F
- Operating voltage: 110 - 240 VAC, N, PE, 50/60 Hz
- Connected load of control unit: 160 W maximum
- Dry contact alarm output in central control system
- Interfaces: Local I/O: RS422, RS232 (Service)
- Inputs for external setpoint variables

### Optional Equipment

- Host protocols via serial RS422 interface:
  - Modbus Modicon RTU  
Modbus configuration s. list Rev: 1.09.
  - Siemens 3964 R RK512  
Siemens configuration s. list Rev 1.09.
  - Profibus DP (additional hardware required)  
Configuration list profibus
  - CT host protocol
  - CT standard protocol.
  - CT 9 bit protocol.
- C2 Live Report

