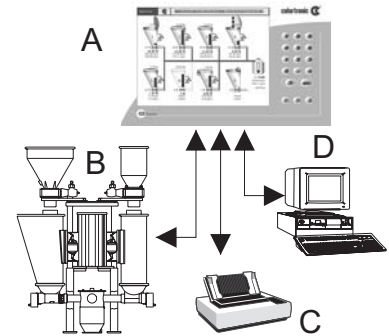


Typical application of a Gravimetric Control System

- A Dosing control system
- B Gravimetric dosing unit
- C Printer
- D Host

Component A is described below.



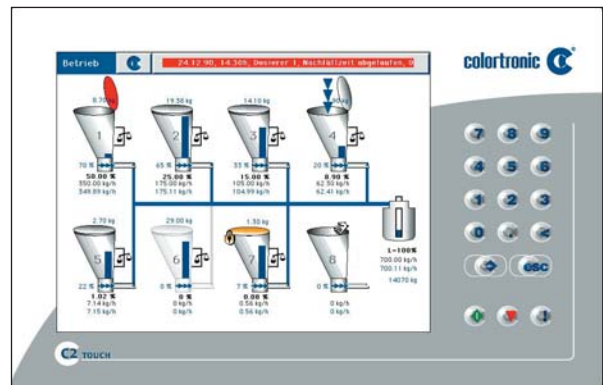
Brief Description

The Colortronic C2 Touch dosing control system is a computerized closed-loop control for the Gravi-blend gravimetric dosing and blending unit.

Data entry can be made during production by means of a touch screen. Operation is menu-driven and can be password protected.

The control offers graphical and numerical display of the operation parameters of the entire installation. In the event journal, all changes in the settings and all alarm messages are time stamped.

- Colortronic dosing control systems are completely maintenance-free and designed for 7 day, 24-hour operation.
- Colortronic dosing control systems meet the european "CE" requirements.



Technical Information

Basic Version

- TFT Touch Screen Display
- Data buffer in case of power failure
- Real-time clock
- A maximum of 8 dosing stations can be controlled
- Type of protection: IP 54
- Permissible operating temperature: -10 to +45°C / 14 to +113 °F
- Permissible storage temperature: -25 to +70°C / -13 to +158 °F
- Operating voltage: 110 - 240 VAC, N, PE, 50/60 Hz
- Connected load of control unit: 90 W maximum
- Dry contact alarm output in central control system
- Interfaces:
 - Local I/O: RS422, RS232 (Service)
 - Option RS422/485 (Host)
 - RS232 (Printer)
 - Inputs for external setpoint variables

Optional Equipment

- Massflow signal 0 to 10000 hz (output at station #8. Only possible when using max. 7 dosing stations)
- Host protocols via serial RS422 interface:
 - Modbus Modicon RTU Modbus configuration s. list Rev: 1.09.
 - Siemens 3964 R RK512 Siemens configuration s. list Rev 1.09.
 - Profibus DP (additional hardware) configuration list profibus
 - CT host protocol
 - CT standard protocol.
 - CT 9 bit protocol.

Functions

- Menu driven
- Messages and entries in plain text and/or graphic
- Date and time
- Entries are checked for wrong data (message)
- Recipe memory for more than 100 recipes
- Storage of dosing factors and/or refill limits. Recipe entry in % or units (e.g. lbs/h)
- Adjustable password levels
- Online system configuration for 2 to 8 dosing stations
- Online multi-language display
- Online switching of units (kg/h, kg/min, lb/hr, lb/min, metric tons/hr, tons av/hr, grams/hr, grams/min)
- Line modes:
 - Line local setpoint manual
 - Line ratio. Setpoint automatic, via level sensor or external setpoint
 - Material level adjustment by analog input extruder rpm (level in collecting hopper is constant, changes of extruder throughput are monitored and the setpoint of the dosing unit changed)
- Level control
 - Automatic line stop if the preselected material level is reached e.g. 1000 Hz
 - Automatic line start if the preselected material level is reached e.g. 2000 Hz
- Printer
 - Parallel interface Print of screenshots
 - HP DeskJet / HP compatible PCL printer
 - Postscript printer Print of online alarms and/or event messages
 - Matrix printer (Line Print)
 - all ISO 8859-1 printers (no line print)
- Line stop by alarm shut-down of individual dosing station feeder empty, motor fault
- Alarm protocol all alarms are monitored by number, time and acknowledgement. 100 messages per day, max. 3 days
- Event protocol
 - All changes of entries are monitored by time.
 - 100 messages per day, max. 3 days
- Quantity mode
- Automatic line stop if preselected quantity is reached
- Auto calibration of dosing stations by calibration button
- Preselection of calibration drive command
- Feeder totalisator / line totalisator
- Desired / actual value display
- Gravimetric / volumetric mode adjustable
- Local or line mode of dosing stations
- Adjustable alarm limits
 - drive command high/low
 - percent value feeding quantity low/high
- Online service / diagnostic port RS232
- PC interface for recording and analysing of process data
- PS/2 interface for external keyboard
- Dry contact at central control unit
- VGA interface for external monitor
- Online interface for service tool
- Digital input via fanout board for each feeder:
 - Enable-Start Feeder Optionboard
 - Stop Feeder Optionboard
 - Alarm shut down Optionboard
- Digital output via fanout board for each feeder:
 - Refill, alarm, operation report Optionboard
- Graphic display of all inputs / outputs
- Trend display desired / actual values for line and feeder

www.colortronic.com

Colortronic AG Switzerland

☎ +41 62 889 25 25
 📠 +41 62 889 25 26
 ✉ info@colortronic.ch

Colortronic GmbH Germany

☎ +49 61 75 7 92-0
 📠 +49 61 75 7 92-1 79
 ✉ info@colortronic.de

Colortronic Sarl France

☎ +33 03 88 59 18 10
 📠 +33 03 88 59 18 11
 ✉ info@colortronic.fr

Colortronic srl Italy

☎ +39 0 131 87 29 33
 📠 +39 0 131 87 29 41
 ✉ info@colortronic.it

Colortronic Systems Pte. Ltd Singapore

☎ +65 677 77 665
 📠 +65 677 88 671
 ✉ ctasia@colortronic.com

Colortronic N.A. Inc. USA

☎ +1 856 312 96 00
 📠 +1 856 312 96 96
 ✉ ctusa@colortronic.com

Colortronic U.K. Ltd. Great Britain

☎ +44 12 46 260 222
 📠 +44 12 46 455 420
 ✉ sales@colortronic.co.uk