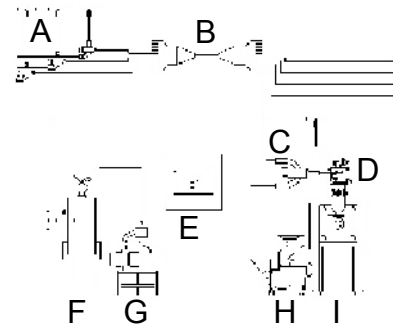


Typical set up for a multiple vacuum conveying system.

- A Material clearing valve
- B Rotary valve
- C Two component valve
- D Hopper loader
- E Conveying control
- F Automatic safety filter
- G Vacuum pump
- H Granulator
- I Plastic processing machine



Component F is described below.

## Brief Description

### Application

The automatic safety filter is used as a central dust and fine collection receiver to protect the vacuum pump from damage. It operates in conjunction with a central conveying system through the central conveying control.

- Colortronic safety filters are designed for continuous 24-hour operation.
- Colortronic safety filters meet the European "CE" requirements.

### Rugged, modular construction

The automatic safety filter is made out of corrosion and abrasion resistant stainless steel. The cleaning of the integrated filter is accomplished automatically. The see-through collection chamber is easily removed by quick disconnects. The unit is easy to operate, access and maintain.



**Technical Information**

**Basic Version**

- Voltage 24 V DC
- Compressed air supply 4-6 bar (60 - 90 PSI) system over pressure
- Wallmounts
- See-through plexiglass collection chamber with quick disconnects
- Safety switch warning when incorrectly assembled (FSA only)

**Models**

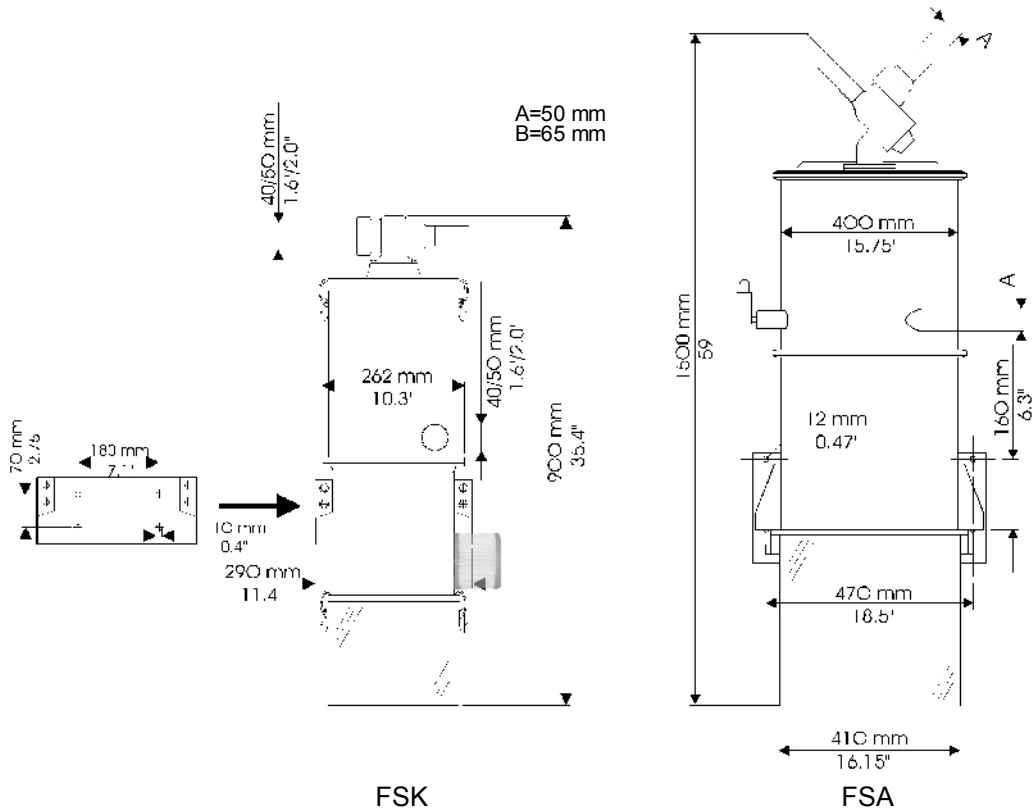
- FSK with 40mm or 50mm pipe connection
- FSA with 40mm or 50mm pipe connection
- FSA with 65mm pipe connection

**Performance Data FSK**

- Filter surface of 0.3 m<sup>2</sup> (3.2 sq. ft)
- Compressed air filter cleaning
- Designed for Colortronic vacuum pumps up to 160 m<sup>3</sup> (250 m<sup>3</sup> on request)
- Weight appr. 14 kg (31 lbs)

**Performance Data FSA**

- Filter surface of 1.6 m<sup>2</sup> (17.2 sq. ft)
- Implosion filter cleaning
- Weight appr. 53 kg (117 lbs)



[www.colortronic.com](http://www.colortronic.com)

**Colortronic GmbH**  
Germany

☎ +49 61 75 7 92-0  
☎ +49 61 75 7 92-1 79  
✉ [info@colortronic.de](mailto:info@colortronic.de)

**Colortronic AG**  
Switzerland

☎ +41 62 889 25 25  
☎ +41 62 889 25 26  
✉ [info@colortronic.ch](mailto:info@colortronic.ch)

**Colortronic Sarl**  
France

☎ +33 03 88 59 18 10  
☎ +33 03 88 59 18 11  
✉ [ctfrance@colortronic.com](mailto:ctfrance@colortronic.com)

**Colortronic srl**  
Italy

☎ +39 0 131 87 29 33  
☎ +39 0 131 87 29 41  
✉ [info@colortronic.it](mailto:info@colortronic.it)

**Colortronic N.A. Inc.**  
USA

☎ +1 856 312 96 00  
☎ +1 856 312 96 96  
✉ [ctusa@colortronic.com](mailto:ctusa@colortronic.com)

**Colortronic U.K. Ltd.**  
Great Britain

☎ +44 12 46 260 222  
☎ +44 12 46 455 420  
✉ [sales@colortronic.co.uk](mailto:sales@colortronic.co.uk)

**Colortronic Systems Pte. Ltd**  
Singapore

☎ +65 677 77 665  
☎ +65 677 88 671  
✉ [ctasia@colortronic.com](mailto:ctasia@colortronic.com)