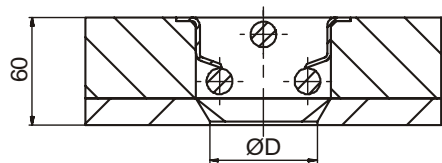
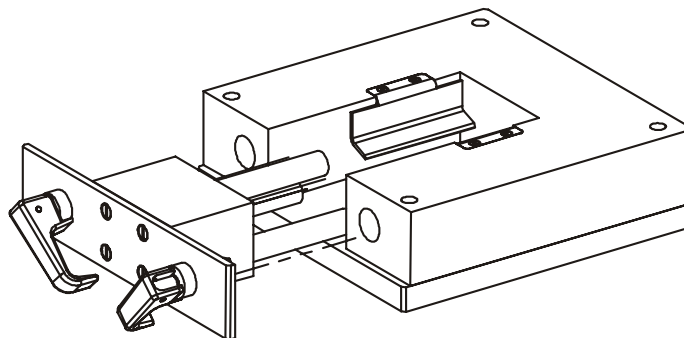
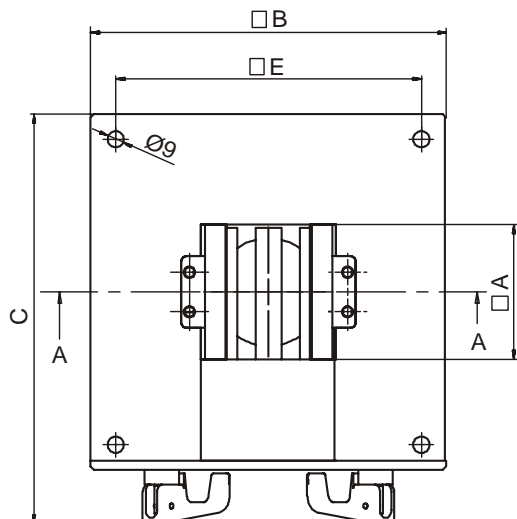


Magnetic Separator SAFEMAG SA

■ Dimensions



View A-A



■ Technical data

	Gauss*	Version	Article	Outlet diameter D		
Neodymium N35	7000	Standard	SA-	040	050	060
Inlet dimension A				60	75	75
Dimension B				168	198	198
Dimension C				198	228	228
Drilling detail E				140	170	170
No. of rods				3	3	3
Weight [kg]				4.35	6.0	6.0

* : readings taken from outer tube surface

Article no.: combination of "Article" and "Outlet diameter" (i.e. SA-040)
All dimensions in mm



Magnetic Separator SAFEMAG SA

■ Conditions of use

- Use:** Separation of finest ferrous particles from plastic granules, regranulates and virgin material directly before being introduced into extruders, injection and blow moulding machinery.
- Bulk material characteristics:** Dry, good free flowing characteristics, without long fibres, grain size <8 mm
- Drop height of bulk material** <200 mm above equipment top edge
- Material flow:** Slow flowing bulk material; or short free fall application (for starve-fed extruders)
- Bulk material temperature:** Max. +100°C (for higher temperatures please see options/accessories)
- Ambient temperature:** -10° to +60°C

■ Scope of delivery / Standard design

- Scope of delivery:** High intensity rare earth magnetic system in a wear resistant housing
- Housing material:** Solid aluminium, top load: 1000 kg, side load: 50 kg
- Tube material:** 316 grade ST/ST
- Surface treatment:** Housing: anodized; tubes: highly polished
- Drilling detail:** 140 x 140 mm respectively 170 x 170 mm
[related to the drilling detail of the Metal Separator PROTECTOR-P]

- Magnetic material:** Manufactured by using high intensity rare earth neodymium magnet material N35
- Magnet characteristics:** Remanence Br: 12000 gauss (app. 7000 gauss on the tube surface)
- Cleaning:** Manual

■ Options / Accessories

- Slide gate (aluminium/ stainless steel)
- Adapter plates
- High temperature application (Samarium-Cobaltmagnet material)
-

■ Special versions

- ATEX certified version (max. zone 20)
- Paint finish (RAL detail necessary)
-