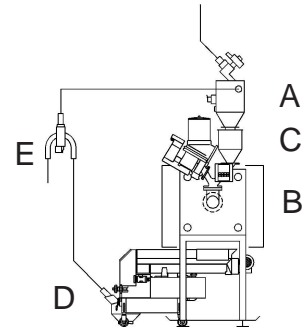


Typical application of direct regrind feedback.

- A Conveying unit
- B Injection molding machine
- C Dosing and blending unit
- D Granulator
- E Two-component proportioning valve

Component D is described below.

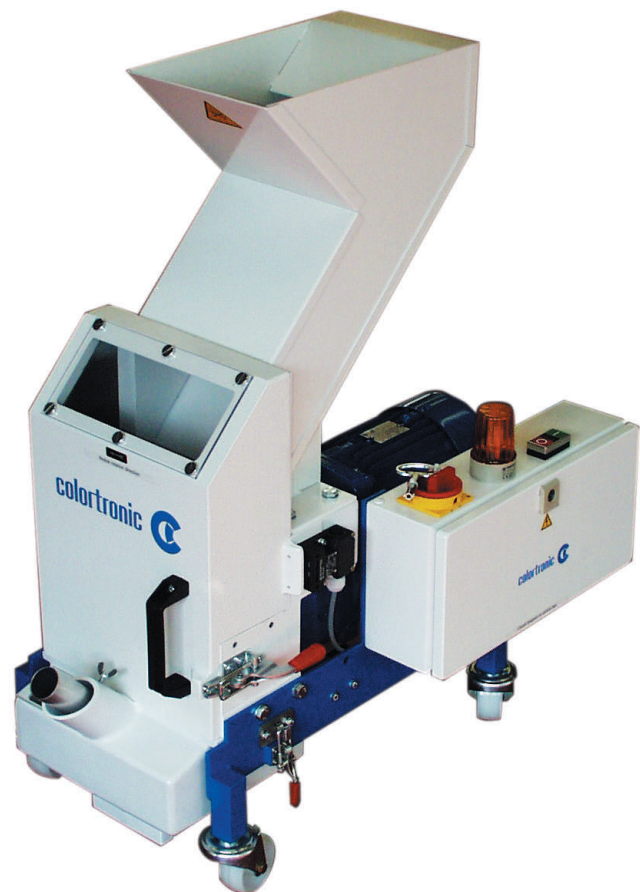


Brief Description

Portable, slow running granulator with feed chute, motor overload protection and visual alarm signal. Easy to maintain and quick to clean. Hinged construction allows easy accessibility to the cutting chamber.

Handles all sprues and rejects from injection molding machines.

- Colortronic granulators are easy to maintain and designed for a 7 day, 24 hour operation.
- Colortronic granulators meet the european "CE" requirements.



Technical Data

Basic Version

- Maintenance free drive
- Staggered horizontal cutting rotor with 6 HSS steel rotor blades
- 2 HSS steel stator blades
- Suction box with integrated suction probe
Ø 40 mm / 1.5 in.
- Hardened perforated screen with various holes sizes available
Ø 3, 4, 5, 6, 8 mm / .12, .16, .20, .24, .31 in.
- Feed chute

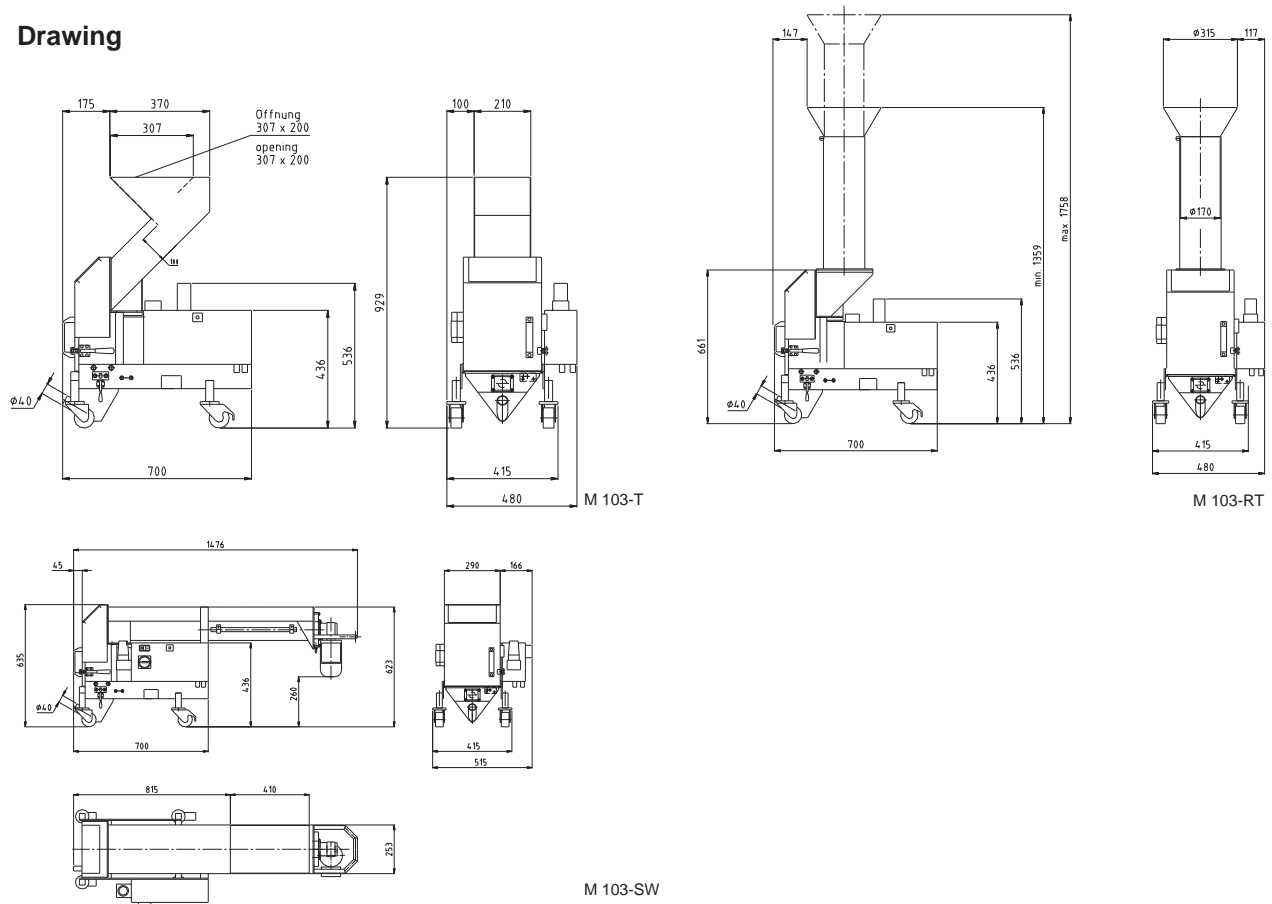
Optional Equipment

- Overfill protection
- Special feed chute designs
- Steel coil feed
- Special voltages
- Blade setting tool
- Special color
- Suction probe 50 mm

Performance

- Maximum material size 100 x 80 mm
- Maximum throughput appr. 15 kg/hr
- Rotor speed 96 RPM
- Cutting size 100 mm
- Power consumption 1,5 kW
- Voltages multiple voltage motor
230 V ±10 %, 3 AC, PE, 50 Hz
400 V ±10 %, 3 AC, PE, 50 Hz
460 V ±10 %, 3 AC, PE, 60 Hz
- Protection class IP 54
- Color
Motor blue, RAL 5011
Chassis blue, RAL 5017
Housing white, RAL 9016
- Weight appr. 126 kg

Drawing



www.colortronic.com

Colortronic AG
Neulandweg 3
CH 5502 Hunzenschwil
Switzerland

☎ +41 62 889 25 25
✉ +41 62 889 25 26
✉ info@colortronic.ch

Colortronic Inc.
155 E. 9th Avenue
Runnemede, NJ 08078
USA

☎ +1 856 312 96 00
✉ +1 856 312 96 96
✉ ctusa@colortronic.com

Colortronic Systems Pte. Ltd
71 Ayer Rajah Crescent 07-19 to 07-21
Ayer Rajah Industrial Estate
Singapore 139951
Singapore

☎ +65 77 77 665
✉ +65 77 88 671
✉ ctasia@colortronic.com