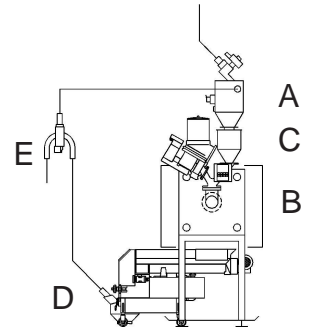


Typical application of direct regrind feedback.

- A Conveying unit
- B Injection molding machine
- C Dosing and blending unit
- D Granulator
- E Two-component proportioning valve

Component D is described below.



## Brief Description

Portable, slow running granulator with feed chute, motor overload protection and visual alarm signal. Easy to maintain and quick to clean. Hinged construction allows easy accessibility to the cutting chamber.

Handles all sprues and rejects from injection molding machines.

- Colortronic granulators are easy to maintain and designed for a 7 day, 24 hour operation.
- Colortronic granulators meet the european "CE" requirements.



**Technical Data**

**Basic Version**

- Maintenance free drive
- Staggered horizontal cutting rotor with 15 HSS steel rotor blades
- 2 HSS steel stator blades
- Suction box with integrated suction probe  
Ø 40 mm / 1.5 in.
- Hardened perforated screen with various holes sizes available Ø 3, 4, 5, 6, 8 mm / .12, .16, .20, .24, .31 in.
- Feed chute

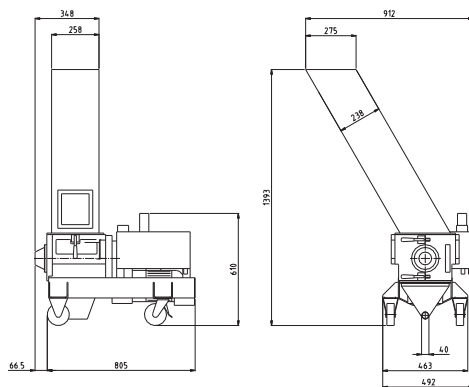
**Optional Equipment**

- Overfill protection
- Special feed chute designs
- Steel coil feed
- Special voltages
- Blade setting tool
- Special color
- Suction probe 50 mm

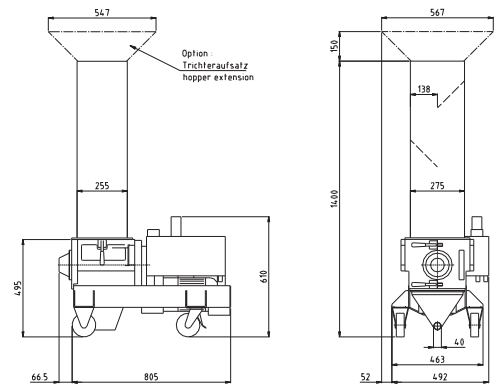
**Performance**

- Maximum material size 220 x 160 mm / 7.8 x 6.3 inch
- Maximum throughput 25 kg/h / 55 lb/h
- Rotor speed 107 RPM
- Cutting size 250 mm
- Power consumption 2.2 kW (3 HP)
- Scissor cut knife configuration
- Voltages multiple voltage motor  
230 V, 3 AC, PE, 50 Hz  
400 V, 3 AC, PE, 50 Hz  
460 V, 3 AC, PE, 60 Hz
- Protection class IP 54
- Color  
Motor blue, RAL 5011  
Chassis blue, RAL 5017  
Housing white, RAL 9016
- Weight 210 kg, 463 lbs

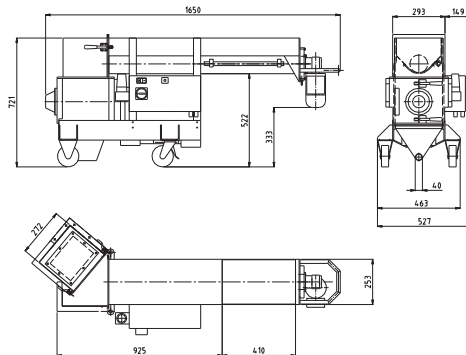
**Drawing**



M 253-T



M 253-RT



M 253-SW

[www.colortronic.com](http://www.colortronic.com)

**Colortronic AG**  
Neulandweg 3  
CH 5502 Hunzenschwil  
Switzerland

☎ +41 62 889 25 25  
✉ +41 62 889 25 26  
✉ info@colortronic.ch

**Colortronic Inc.**  
155 E. 9th Avenue  
Runnemede, NJ 08078  
USA

☎ +1 856 312 96 00  
✉ +1 856 312 96 96  
✉ ctusa@colortronic.com

**Colortronic Systems Pte. Ltd**  
71 Ayer Rajah Crescent 07-19 to 07-21  
Ayer Rajah Industrial Estate  
Singapore 139951  
Singapore

☎ +65 77 77 665  
✉ +65 77 88 671  
✉ ctasia@colortronic.com