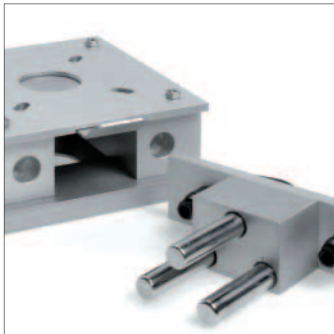
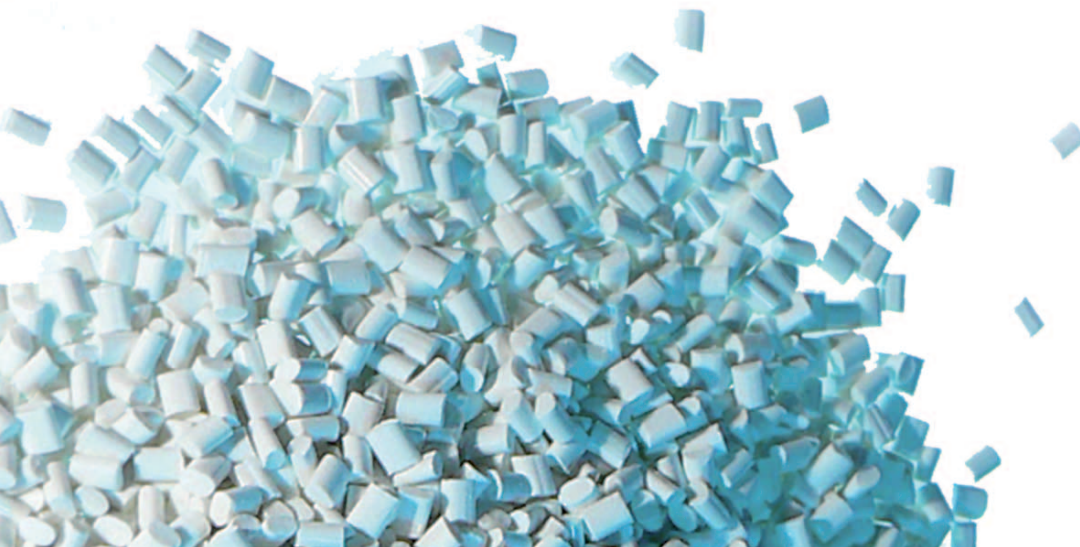


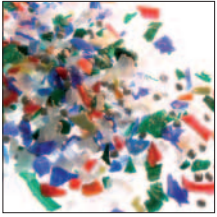
**Optimal mould and  
machine protection for  
injection moulding machines,  
extruders,  
blow moulding machines**



**Metal separation with  
SAFEMAG  
PROTECTOR**

- prevents mould damage
- reduces reject rates
- increases machine running times
- minimises the loss of good material





Environmental awareness, but also economic considerations, have resulted in the use of industry-quality granulate (regenerated material, ground material) for various products. With many articles a slight loss of properties does not prevent the use of such materials. In a few cases a slight contamination with foreign objects such as metal particles makes processing more difficult.

Depending on the production system this may cause unwanted machine downtimes. The apparent economic advantage thus is quickly lost if the resulting downtimes cannot be avoided. The most obvious solution of using metal separators results in immediate success.

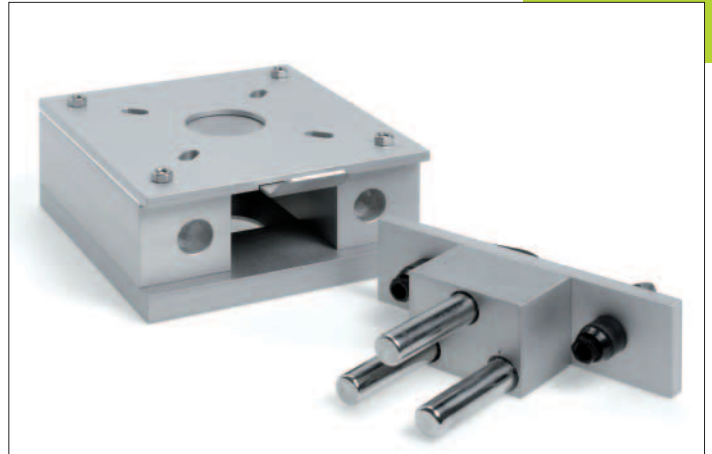
Magnet separators primarily are used for pre-separation in cases of increased contamination with ferrous metals. Magnet separators that are installed upstream of inductive metal separators remove ferrous metals and thus reduce the load on inductive separation. The advantage of such pre-separation is a reduced loss of good material.

The extremely high forces of the Neodymium magnet material even allow the separation of iron powder and of slightly magnetised stainless steel particles from the product flow.

## SAFEMAG

### Minimum installation height when limited space is available

Unrivalled:  
Extremely low height  
of 60 mm  
Standard nominal  
widths  
40 mm, 50 mm, 60 mm



## EXTRACTOR

### For larger nominal widths and grain sizes

Height 165 mm  
Standard nominal  
widths  
40 mm to 120 mm



## SAFEMAG and PROTECTOR in a team

No metal will pass  
this combination

- Optimal combination for separating magnetic and non-magnetic metal contaminations
- Excellent accessibility allows easy and efficient cleaning in no time at all (EASY CLEAN)
- Outstanding ease of integration in existing systems by way of adaptor plates (inlet and outlet)

The SAFEMAG (or EXTRACTOR) magnet separator can be combined with inductive metal separators, e.g. PROTECTOR.

The combination of these two systems is the economically and technically most efficient solution.

The PROTECTOR metal separator removes magnetic and non-magnetic metal particles (steel, stainless steel, aluminium, ...) from standing or slow-moving bulk material columns.



Regenerated plastic material (industry ware). Metal contaminations that are embedded in a granulate grain may cause machine downtimes. Magnet separators and inductive metal separators protect the processing machines, prevent malfunctions, and thus increase process continuity.

## S+S Separation and Sorting Technology GmbH

Regener Str. 130  
D-94513 Schönberg  
Germany  
Tel. +49 8554 308-0  
Fax +49 8554 2606  
info@se-so-tec.com  
www.se-so-tec.com

## Subsidiaries and associated companies

**S+S Inspection Ltd.**  
6 Kingdom Close  
Kingdom Business Park  
Segensworth East  
Fareham  
Hampshire PO15 5TJ  
United Kingdom  
Tel.: +44 1489 553 740  
Fax: +44 1489 575 471  
info@sesotec.co.uk  
www.sesotec.co.uk

**S+S Separation et Technologie Sàrl**  
4 rue Artisanale  
F-67310 Wasselonne  
France  
Tel.: +33 388 04 2230  
Fax: +33 388 04 2231  
info@se-so-tec.fr  
www.se-so-tec.fr

**S+S Inspection Asia Pte Ltd.**  
25 International Business Park  
#01-67 German Centre  
Singapore 609916  
Singapore  
Tel.: +65 6562 8875  
Fax: +65 6562 8876  
info@se-so-tec.com.sg  
www.se-so-tec.com.sg

**S+S Indian Representative Office**  
No. 1, Madhavi Apartments  
2102/5 Vijaynagar Colony  
Sadashiv Pet, Off Tilak Road  
Pune 411 030  
India  
Tel.: +91 20 243 27 872  
Fax: +91 20 243 27 873  
info.india@se-so-tec.com  
www.se-so-tec.com

**S+S Separation and Sorting Technology (Qingdao) Co., Ltd.**  
Shanghai Branch  
Room 3010, Summit Center  
No. 1088 Yanan West Road  
CN-200052 Shanghai  
China  
Tel.: +86 21 62076644  
Fax: +86 21 52374623  
enquiry@se-so-tec.com.cn  
www.se-so-tec.com.cn

**S+S Inspection Inc**  
5126 South Royal  
Atlanta Drive  
Tucker  
Georgia 30084, USA  
Tel.: +1 770 493 9332  
Fax: +1 770 934 3384  
info@sesotec-usa.com  
www.sesotec-usa.com

## S+S system world



### Detecting and separating contaminants:

Removing contaminants:

- metals
- plastics
- glass
- ceramics, porcelain, stones
- and many others

Removing from (good material):

- bulk materials
- liquids and pastes
- individually packaged products
- packed and loose items

Product types:

- end-products (food, textiles, plastics etc)
- industrial raw materials
- recycled materials

Sensors can be integrated into all types of conveyor systems



### Detecting and separating sub-standard products:

Qualitative defects:

- incorrect colour
- agglomerations
- breakages
- air inclusions in packs
- incorrect positioning / distribution

Quantitative defects:

- incorrect weight
- count errors (incorrect number of items in package)

Product types:

- end-products (food, textiles, plastics etc)
- industrial raw materials
- recycling materials

Sensors can be integrated into all types of conveyor systems



### Sorting mixed materials into single fractions:

Types of material:

- glass
- plastics
- metals
- and many others

Delivery flows:

- bulk materials
- individually packaged product

Sensors can be integrated into:

- conveying systems
- bulk material flows

For further information or to discuss your particular application contact one of our specialists.

[www.se-so-tec.com](http://www.se-so-tec.com)



**Choose the Original  
Choose Success!**

**... and more than 40 agencies worldwide**