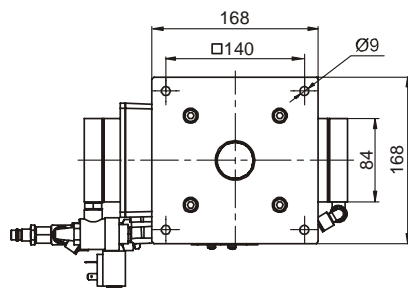
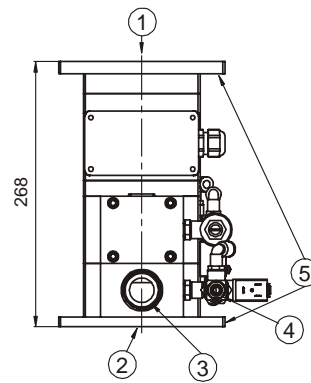
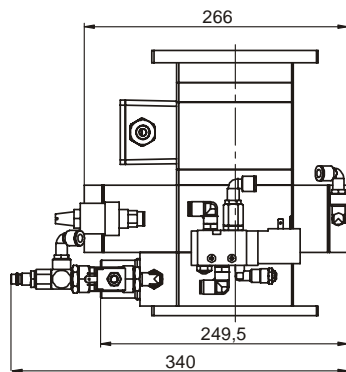


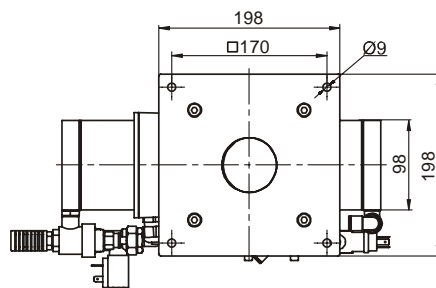
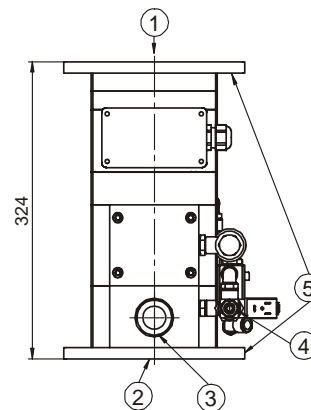
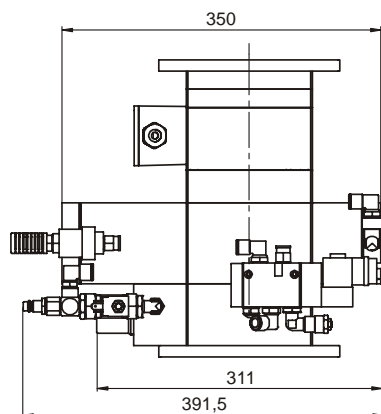
PROTECTOR 30-60 metal separator

■ Dimensions PROTECTOR 30-40



- 1 Inlet
- 2 Material outlet
- 3 Reject outlet
- 4 Compressed-air connection
- 5 Cover plate (drill hole diagram identical top and bottom)

■ Dimensions PROTECTOR 50-60



- 1 Inlet
- 2 Material outlet
- 3 Reject outlet
- 4 Compressed-air connection
- 5 Cover plate (drill hole diagram identical top and bottom)

■ Technical data

Type	PROTECTOR 30	PROTECTOR 40	PROTECTOR 50	PROTECTOR 60
Article number	PTEC-P030-0	PTEC-P040-0	PTEC-P050-0	PTEC-P060-0
Nominal passage width	30	40	50	60
Maximum scanning sensitivity ¹⁾ Ø Fe-ball	0.3	0.4	0.5	0.7
Weight [kg] (diverter unit)	11	11	19	19

All dimensions in mm

¹⁾ Sensitivity (ferrous ball Ø in mm) is measured in the centre of the detection head opening (= most disadvantageous position). It is also influenced by the selected product angle, the product effect (= conductivity of the product, e.g. caused by dampness, carbon concentration, metal oxide, etc.), the product temperature and the surroundings. Detectability of metal particles depends on their type, shape and location.



PROTECTOR 30-60 metal separator

■ Conditions of use

Use: To analyse slowly moving columns of material on the feeder of injection moulders, extruders and blow moulders. It removes even smallest metal particles from granulates, regenerates or grinding stock, even when enclosed in product.

Bulk material classification:

- **Grain shape:** Granulates, grinding stock
- **Max. grain size:** Ball $\varnothing < 6$ mm Protector 30/40, ball $\varnothing < 10$ mm Protector 50/60
Depending on the model, metal particles of $\varnothing 0.3$ mm to 23 mm can be rejected
- **Pourability:** Good, medium
- **Attributes:** Dry, damp, not abrasive, product effects (conductivity) can potentially be compensated
- **Conveying speed:** 0,005 to 2,0 m/sec
Free fall, free-fall height max. 150 mm over the top of the device or slowly moving column of material
- **Bulk material temperature:** Maximum +80° C
- **Ambient temperature:** -10° C to +60° C

■ Scope of delivery / Design / Connections

Scope of delivery: Complete system with integrated detection coil, diverter unit („Quick-Valve“) and remote control unit PRIMUS

Mechanical design: Detection unit and diverter unit: aluminium anodized
Diverter unit vertical and side loading: 300 kg / 50 kg static, no tilting force
Control enclosure: sheet steel, varnished, aluminium grey (RAL 9007)
Scanning pipe: PE-EL
Parts in contact with product: aluminium anodized, PE-EL, Teflon, PA
Compressed air-connection: 6 bar; plug nipple NW 7.2
Compressed air consumption: approx 50 litre / switch operation

Electrical design: Control unit: detached, cable length 3 m
Operating voltage: 100-240 VAC ($\pm 10\%$), 50/60 Hz
Current consumption: approx 160 mA / 115 V, approx. 80 mA / 230 V
Mains cable: 1.8 m with plug
Ingress protection: IP 54
Eject duration: adjustable from 0.05 to 29 sec
Self-monitoring system: detection coil and outputs
Scanning sensitivity: selectable with 8 adjustments
Operation: see technical data sheet for Control Unit PRIMUS

■ Options / Accessories

- | | | |
|---|--|---|
| <input type="checkbox"/> Visual alarm | <input type="checkbox"/> Counter (number of detections) | <input type="checkbox"/> S+S adapter plate system |
| <input type="checkbox"/> Failure indication | <input type="checkbox"/> Push button for manual rejection | <input type="checkbox"/> SAFEMAG inline magnet |
| <input type="checkbox"/> Failure and metal indication | <input type="checkbox"/> Compressed-air monitor | <input type="checkbox"/> UL/CSA certificate |
| <input type="checkbox"/> Audible alarm | <input type="checkbox"/> Design for bulk material temperature of up to 140° C | <input type="checkbox"/> US-power cable |
| <input type="checkbox"/> Failure indication | <input type="checkbox"/> 25 l Container with 2 m vacuum tube for reject material | <input type="checkbox"/> Test samples |
| <input type="checkbox"/> Failure and metal indication | <input type="checkbox"/> 60 l Container with 2 m vacuum tube for reject material | |
| <input type="checkbox"/> Combination alarm (visual alarm and audible alarm) | | |
| <input type="checkbox"/> Failure indication | | |
| <input type="checkbox"/> Failure and metal indication | | |

■ Special versions / Supplementary systems

- | | |
|--|---|
| <input type="checkbox"/> Design for free-fall height of 500 mm | <input type="checkbox"/> Magnet systems for pre-removal of ferrous metals |
| <input type="checkbox"/> Special supply voltages | <input type="checkbox"/> Hopper magnet |
| <input type="checkbox"/> Surface nickel plated | <input type="checkbox"/> Inline magnet |
| <input type="checkbox"/> Cable set for remote control unit:
6 m, 10 m, 15 m | <input type="checkbox"/> |