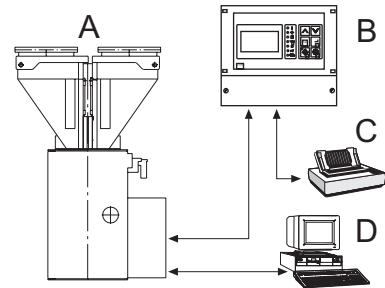


Typical application of a gravimetric batch blender.

- A Gravimetric Batch Blender
- B Control Unit
- C Printer
- D Host

Component A is described below.



Description

Colortronic's gravimetric batch blender Ultrablend 375 is ideally suited for blending granulates, regrinds and non-compacting powders (less than 5%).

High dosing accuracy and consistency improves end product quality and saves money by using less additives and reducing scrap. The Ultrablend 375 is specially designed for direct mounting on injection molding machines and extruders with a throughput up to 500 kg/h. All products are dosed and weighed one after each other into a weigh bin supported by a single load cell. Once all components are weighed, they are passed to the mixing chamber where they are homogenized before exiting the blender.

- Ultrablend is easy to maintain and designed for a 7 day, 24 hour operation.
- Ultrablend meets the european "CE" requirements.

Rugged, modular construction

Gravimetric batch blender for up to six components. Stainless steel material contact surfaces. The Product is weighed with a single load cell, eliminating need for load cell matching. The vertical slide gate design improves accuracy and results in a compact design. The modular construction for extension hoppers and conveying system integration guarantees high flexibility.



Technical Data

Basic Version

- Up to 6 dosing components
max. 4 slide gates / max. 4 screw feeders
- Weigh hopper volume: 4 Liters
- Mixer volume: 10 Liters
- Dosing hopper volume: 2.2 / 6 / 10 / 25 Liters
- Maximum throughput * 2 components up to 500 kg/h
3 components up to 400 kg/h
4 components up to 350 kg/h
- Operating voltage: 400 V +/- 10 %, 3AC, 50-60 Hz
- Air pressure: 6 bar
- Weight (4 components): 70 kg
- Control unit C180

* Throughputs based on free flowing granules with bulk density of 0.6 kg/l.
Consult the technical department for custom designed rates.

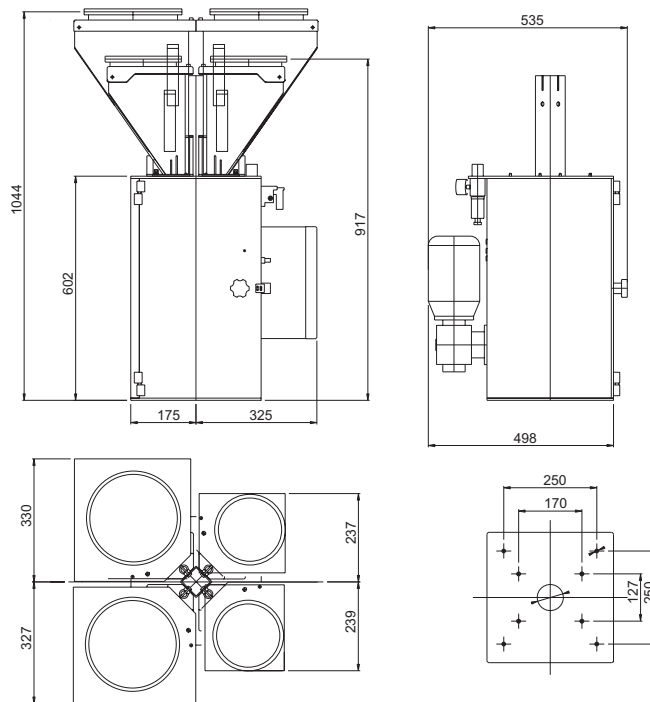
Versions

- Dosing hopper SV-M for granules and regrind
25 l, max. 270 g/s
- Dosing hopper SV-S for granules and regrind
6 l, max. 120 g/s
- Screw feeder DS05 for granules and regrind
2.2 l, max. 8 g/s
- Screw feeder CT22 for granules and regrind
- Screw feeder CT65 for granules and regrind

Optional Equipment

- Screw feeders DS05; CT22; CS65
- Manual or pneumatic slide gate under blender
- Level sensor control of slide gate below the blender
- Hopper extension modules
- Conveying systems
- Level sensors in dosing hoppers
- Machine adapters
- Special voltages
- Host communication via Modbus
- Central blender stand with single and triple suction box

Dimensions



www.colortronic.com

Colortronic GmbH
Germany
☎ +49 61 75 7 92-0
☎ +49 61 75 7 92-1 79
✉ info@colortronic.de

Colortronic AG
Switzerland
☎ +41 62 889 25 25
☎ +41 62 889 25 26
✉ info@colortronic.ch

Colortronic Inc.
USA
☎ +1 856 312 96 00
☎ +1 856 312 96 96
✉ ctusa@colortronic.com

Colortronic Systems Pte. Ltd
Singapore
☎ +65 677 77 665
☎ +65 677 88 671
✉ ctasia@colortronic.com

Colortronic s.a.r.l.
France
☎ +33 03 88 59 18 10
☎ +33 03 88 59 18 11
✉ ctfrance@colortronic.com

Colortronic srl
Italy
☎ +39 0 131 87 29 33
☎ +39 0 131 87 29 41
✉ info@colortronic.it

Colortronic U.K. Ltd.
Great Britain
☎ +44 12 46 260 222
☎ +44 12 46 455 420
✉ sales@colortronic.co.uk