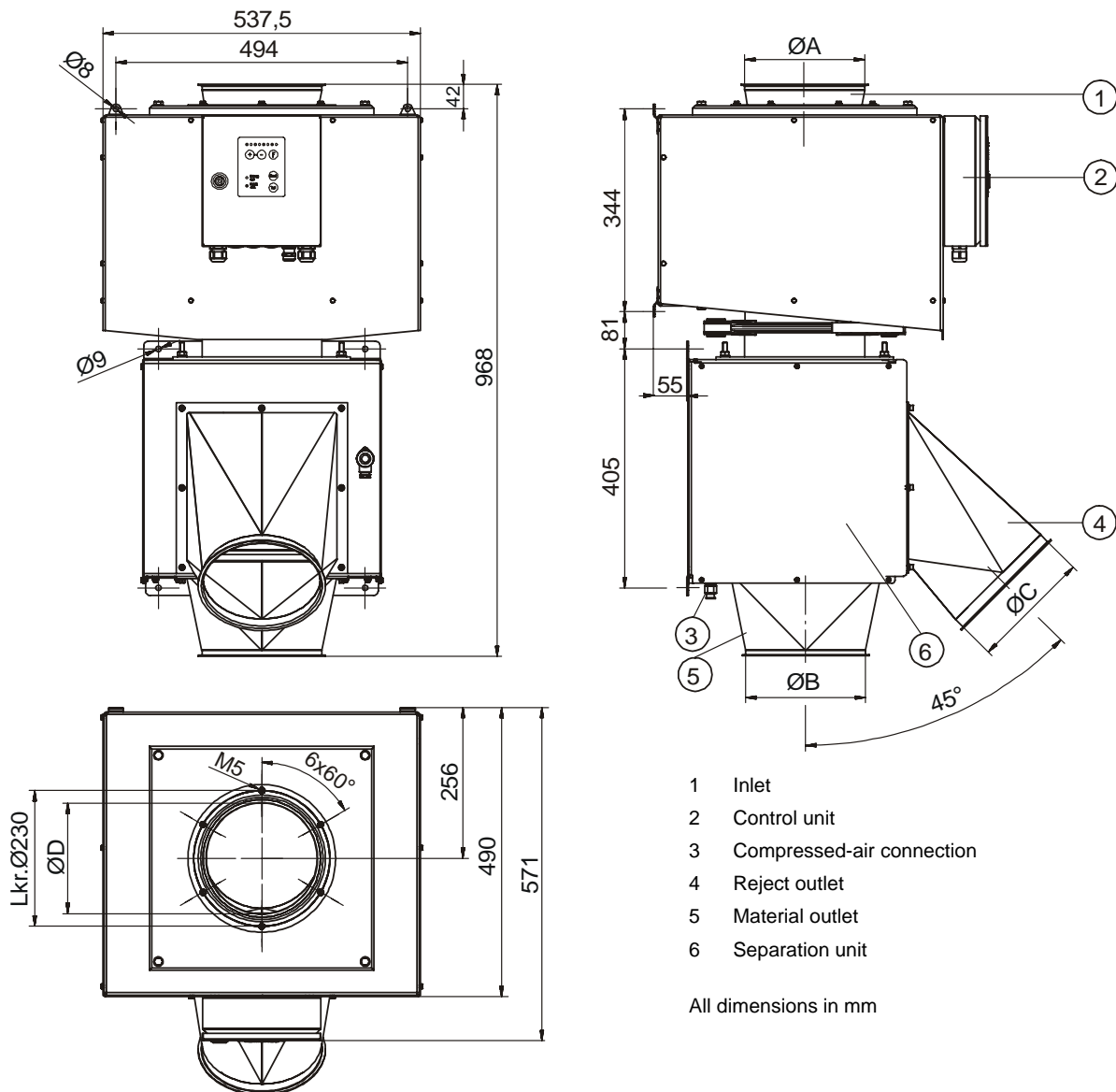


RAPID VARIO 200-250-PRIMUS metal separator

■ RAPID VARIO-P 200 - Dimensions



■ Technical data

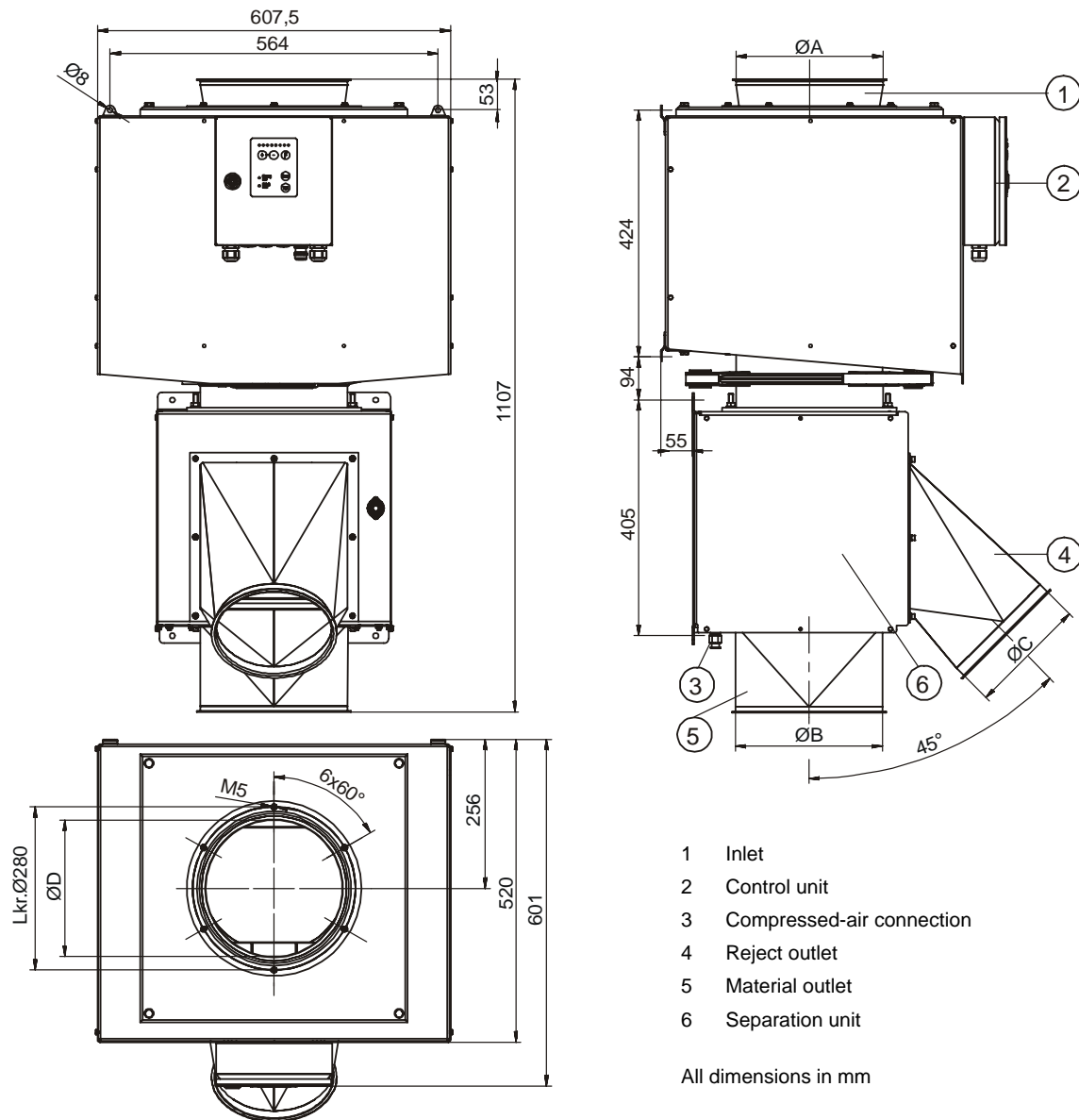
Model number	RAPID VARIO-P 200
Article number	RV-P200-0
Nominal width $\varnothing A$ Jacob system connector	199 mm
Nominal width $\varnothing B$ Jacob system connector	199 mm
Nominal width $\varnothing C$ Jacob system connector	199 mm
Effective ID of inlet pipe $\varnothing D$	187.6 mm
Maximum sensitivity ¹⁾ \varnothing Ferrous ball	1.7 mm
Maximum throughput ²⁾	44.000 l/h
Weight [kg]	57

¹⁾ Sensitivity (ferrous ball \varnothing in mm) is measured in the centre of the detection head opening (= most disadvantageous position). It is also influenced by the selected product angle, the product effect (= conductivity of the product, e.g. caused by dampness, carbon concentration, metal oxide, etc.), the product temperature and the surroundings. Detectability of metal particles depends on their type, shape and location.

²⁾ Throughput is dependent on pourability and density of the bulk material as well as where the metal separator is installed.

RAPID VARIO 200-250-PRIMUS metal separator

■ RAPID VARIO-P 250 - Dimensions



- 1 Inlet
- 2 Control unit
- 3 Compressed-air connection
- 4 Reject outlet
- 5 Material outlet
- 6 Separation unit

All dimensions in mm

■ Technical data

Model number	RAPID VARIO-P 250
Article number	RV-P250-0
Nominal width $\varnothing A$ Jacob system connector	249 mm
Nominal width $\varnothing B$ Jacob system connector	249 mm
Nominal width $\varnothing C$ Jacob system connector	199 mm
Effective ID of inlet pipe $\varnothing D$	234.6 mm
Maximum sensitivity ¹⁾ \varnothing Ferrous ball	2.35 mm
Maximum throughput ²⁾	69.000 l/h
Weight [kg]	63

¹⁾ Sensitivity (ferrous ball \varnothing in mm) is measured in the centre of the detection head opening (= most disadvantageous position). It is also influenced by the selected product angle, the product effect (= conductivity of the product, e.g. caused by dampness, carbon concentration, metal oxide, etc.), the product temperature and the surroundings. Detectability of metal particles depends on their type, shape and location.

²⁾ Throughput is dependent on pourability and density of the bulk material as well as where the metal separator is installed.



RAPID VARIO 200-250-PRIMUS metal separator

■ Conditions of use

Use:	For inspecting freefalling bulk materials in the plastics industry but also in other industries with similar applications.
Bulk material characteristics:	Dry, free-flowing, no long fibres, any possible product effect must be able to be tuned out, grain size <8mm
Drop height of bulk material:	Max 500mm above equipment top edge
Material flow:	No back draft of material
Bulk material temperature:	Maximum +80° C
Ambient temperature:	-10° C to +60° C

■ Scope of delivery / Standard design

Scope of delivery:	Metal separator with separate detection and separation units (mounted using Jacob's quick-release fasteners), integral PRIMUS control unit; good and reject material outlets with Jacob's connectors
Operation:	<ul style="list-style-type: none"> • Membrane keypad with 3 keys as well as Reset and Test buttons • Access protection • LED lights for operation, metal alarm and fault
Electronics housing:	Sheet steel, varnished, aluminium grey (RAL 9007)
Detection unit:	Sheet steel, varnished, aluminium grey (RAL 9007)
Separation unit:	Stainless steel 1.4301 (AISI 304), bead blasted
Parts in contact with product:	Stainless steel 1.4301 (AISI 304), aluminium, PE-EL, Teflon, POM
Scanning pipe:	PE-EL
Operating voltage:	100-240 VAC (±10%), 50/60 Hz
Current consumption:	Approx. 160 mA/115 V, approx. 80 mA/230 V
Mains cable:	1.8 m with plug
Compressed air connection:	5-8 bar; 6/8 mm hose connection
Ingress protection:	IP 54 (cover and on site weather protection is necessary)
Compressed air consumption:	1.3 l / switch operation
Eject duration / Reject time:	Adjustable from 0.05 to 29 sec
Scanning sensitivity:	Selectable with 8 adjustments
Self-monitoring system:	Detection coil and outputs
Max. conveying pipe pressure:	Maximum 0.5 bar

■ Options / Accessories

- | | | |
|---|--|---|
| <input type="checkbox"/> Visual alarm | <input type="checkbox"/> Counter (number of detections) | <input type="checkbox"/> Monitor system for diverter |
| <input type="checkbox"/> Failure indication | <input type="checkbox"/> Low-wear scanning pipe | <input type="checkbox"/> Compressed-air monitor |
| <input type="checkbox"/> Failure and metal indication | <input type="checkbox"/> Foodgrade scanning pipe | <input type="checkbox"/> Heat resistant version up to 140° C material temperature |
| <input type="checkbox"/> Audible alarm | <input type="checkbox"/> Metal parts in touch with product made of stainless steel 1.4301 (AISI 304) | <input type="checkbox"/> Test samples |
| <input type="checkbox"/> Failure indication | <input type="checkbox"/> Cable set for remote control unit: 3 m, 6 m, 10 m, 15 m | <input type="checkbox"/> UL/CSA certificate |
| <input type="checkbox"/> Failure and metal indication | <input type="checkbox"/> Filter control valve | <input type="checkbox"/> US-power cable |
| <input type="checkbox"/> Combination alarm (visual alarm and audible alarm) | <input type="checkbox"/> Push button for manual rejection | |
| <input type="checkbox"/> Failure indication | | |
| <input type="checkbox"/> Failure and metal indication | | |

■ Special versions

- | | |
|--|--|
| <input type="checkbox"/> Special varnishes | <input type="checkbox"/> Pipe transition pieces with flanges |
| <input type="checkbox"/> Special supply voltages | <input type="checkbox"/> Free fall height >500 mm |
| <input type="checkbox"/> High abrasive materials | <input type="checkbox"/> Grain size >8 mm |
| <input type="checkbox"/> Explosion-proof | <input type="checkbox"/> |

■ Supplementary systems

- | | |
|---|--------------------------------|
| <input type="checkbox"/> Magnet systems for pre-removal of ferrous metals | <input type="checkbox"/> |
| <input type="checkbox"/> Hopper magnet | |
| <input type="checkbox"/> EXTRACTOR inline magnet with connectors for Jacob-pipe | |
| <input type="checkbox"/> Inline chute magnet | |
| <input type="checkbox"/> Magnet drum separator | |



RAPID VARIO 200-250-PRIMUS metal separator

